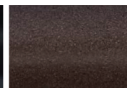
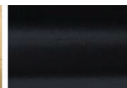
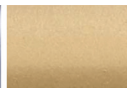


THE GREAT OUTDOORS



The Fintal Company

Known for their designer decorative hardware, the beauty and sophistication of **The Fintal Company** need not be kept indoors. Their Outdoor Collection pairs the design and craftsmanship you expect with five custom finishes guaranteed not to rust or fade for five years when maintained properly. To ensure longevity, each order comes with a 2-ounce bottle of finish and protective topcoat.



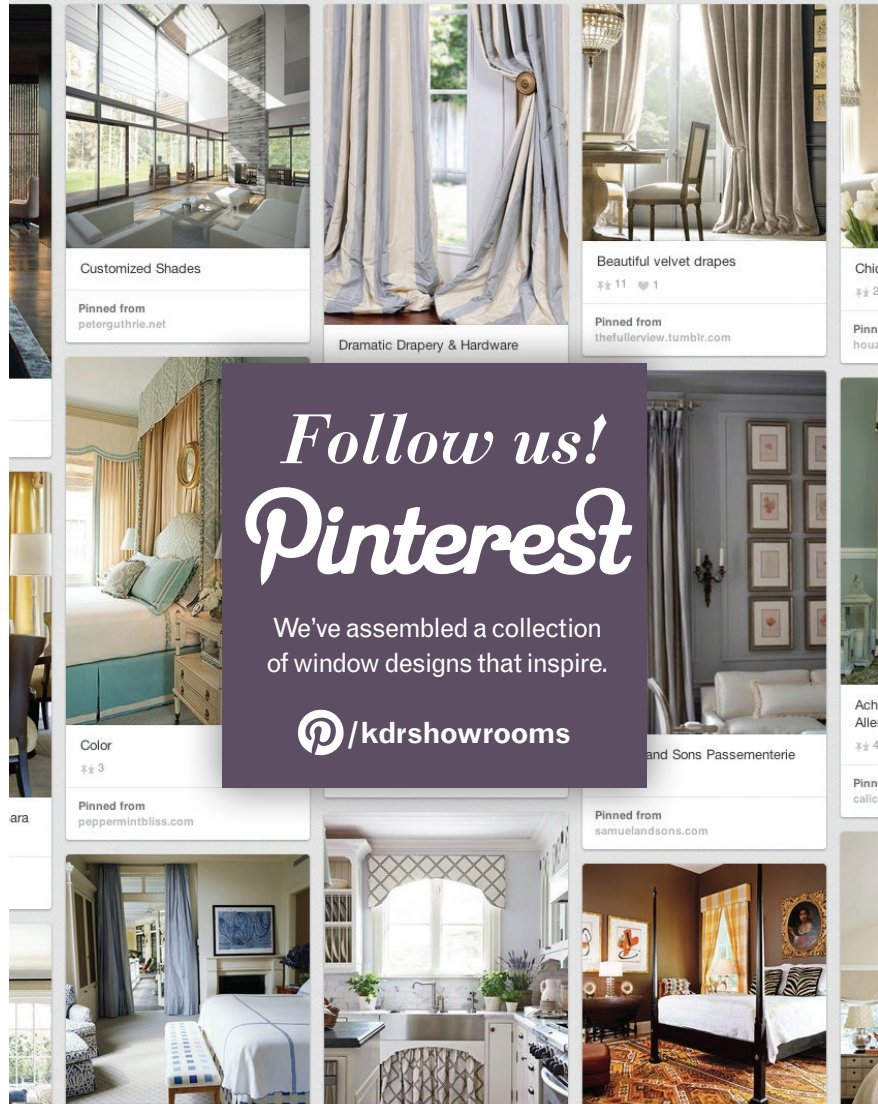
Aluminum

Soft Gold

Flat Black

Bronze

Mahogany Rust



NATURAL WINDOW COVERINGS



A LOOK FROM INSIDE AND OUT; examples from Kirsch of natural shades with no liner, a light-filtering liner and room darkening liner.

KDR's Window Covering Department offers natural window coverings from Kirsch and Hartmann&Forbes. We've assembled a short list of helpful considerations for reference when selecting the right shade for your client.

LIGHT CONTROL & PRIVACY

- While you might prefer the look of a natural shade without a liner, you might also consider a light-filtering option or a room-darkening/blackout liner.
- Liners not only provide extra privacy and various levels of light filtration, they protect the shade itself as well as the home's furnishings.
- As an alternate privacy option, you might consider a shade that lowers from the top down (Top Down/Bottom Up by Kirsch and SplitView by Hartmann&Forbes).

VALANCE OPTIONS

- Both Hartmann&Forbes and Kirsch offer natural shades with, or without a valance.
- In addition to a standard, straight-hanging valance, Kirsch offers a wood valance (a simple strip of molding) and a variety of scalloped edge designs.



From Hartmann&Forbes: Liniedge (above) and fabric liner (below)





KDR [DESIGNER SHOWROOMS]

ST. LOUIS SHOWROOM

11660 Page Service Drive
St. Louis, MO 63146
TEL. 314.993.5020 FAX 314.993.6551
800.235.7765

KANSAS CITY SHOWROOM

8510 Marshall Drive
Lenexa, KS 66214
TEL. 913.859.0400 FAX 913.859.0483
800.556.4598

MINNEAPOLIS SHOWROOM

275 Market Street, Ste. 408
Minneapolis, MN 55405
TEL. 612.332.0402 FAX 612.332.0433
800.876.4539

Save The Date!

Spring Market events are right around the corner. Mark your calendars to view new spring introductions.

KANSAS CITY

Thursday, April 24

ST. LOUIS

Tuesday, April 29

MINNEAPOLIS

Thursday, May 1

**\$5 KIRSCH
UPGRADES** Jan. 17 – March 17

See inside for details.

**Sign up to receive our monthly
window promotions directly to your inbox.**

To subscribe visit: <http://bit.do/KDR-showrooms-subscribe>

www.kdrshowrooms.com

Follow us!



/kdrshowrooms



/kdrshowrooms



/kdrshowrooms



/pro/kdrshowrooms

SELLING POINTS

MOTORIZATION AT A GLANCE

Perfect for hard-to-reach windows, residential and commercial applications, the convenience of motorization is available with select roman and roller shades, panel tracks, wood blinds and shutters from Hartmann&Forbes, BTX, Lutron and Norman Shutters.

- **Hartmann&Forbes'** Automation Specialists help designers specify and manage automation projects at no-charge. They collaborate with a designer's team of architects, builders, installers and integrators to ensure the project is completed accurately and efficiently.
- The **BTX Drapery System** incorporates designer rods with custom controls. Their AC Drapery System pulls up to 160 pounds of drapery, making it an ideal choice for large-scale commercial and hospitality projects. Their DC Drapery System offers a simple, cost-effective solution using a standard wall outlet or an optional solar panel.
- The **BTX Motorized Roller Shade Systems** are available as AC or DC systems.
- **Lutron** offers battery-powered roller and cellular shades including an ultra-efficient drive technology and 3-5 year battery life at a price point comparable to that of a manual shade.
- **Norman Shutters** is the only national brand offering motorized shutters and their **PerfectTilt® RF System** comes with two configurations: a standard, rechargeable battery pack or a solar option.

Offerings vary by manufacturer. Contact the KDR Window Covering Department for help selecting the right system for your space.

Hartmann&Forbes

Kirsch



SAVE ON KIRSCH

\$5 *January 17 – March 17*
UPGRADES

Standard Cordless (Honeycomb, Woven Wood, Real Wood & Roman Shades)
Cordless Top Down/Bottom Up (Honeycomb and Roman Shade)

**RECEIVE A \$100 PER
UNIT SPIFF ON AMBIANCE**

Excludes metal blinds and contract orders.